



VŠEOBECNÁ ZDRAVOTNÍ POJIŠTOVNA
ČESKÉ REPUBLIKY

Financing Mental Health in the Czech Republic

Future Challenges

*Pavel Horák, MD, CSc., MBA
Director, VZP Czech Republic*

Burden from the past

- **Stigma for the patient to seek psychiatric care, especially when hospitalized in psychiatric „sanatoria's“**
- **Drug and alcohol abuse considered self inflicted problems, not disease, treatments still considered by many to be not fair to be reimbursed from the medical insurance**
- **Out of the city approach (sequestration) for mental health care facilities, inappropriate number of acute beds**
- **Psychiatry considered low cost segment with mainly hospitalization costs, no „high tech“ medicine, low atraktivitiy for the young doctors, low salaries**
- **Reimbursement schemes not reflecting specificity of mental health care within the segment of long term care (pharmacotherapy)**

Network of outpatient clinics – adjusted number of physician posts (PPLM) (including outpatient departments in hospitals)

Region	PPLM			calculated per 100 000 inhabitants		
	y.2007	y.2008	change	y. 2007	y. 2008	change
City of Prague	206.02	202.95	-1.5%	17.30	17.03	-1.6%
Central Bohemia Region	56.56	59.56	5.3%	4.72	4.92	4.2%
South Bohemian Region	34.93	37.62	7.7%	5.58	5.99	7.3%
Pilsen Region	38.52	38.99	1.2%	6.91	6.98	1%
Karlovy Vary Region	14.10	12.5	-11.3%	4.65	4.13	-11.2%
Ústí Region	41.21	40.7	-1.2%	4.99	4.93	-1.2%
Liberec Region	21.53	23.32	8.3%	4.95	5.36	8.3%
Hradec Králové Region	33.15	34.78	4.9%	6.03	6.32	4.8%
Pardubice Region	27.87	28.73	3.1%	5.45	5.61	2.9%
Vysočina Region	30.07	32.18	7%	5.89	6.30	7%
South Moravia Region	81.89	83.64	2.1%	7.13	7.29	2.2%
Olomouc Region	37.83	47.45	25.4%	5.94	7.45	25.4%
Moravian-Silesian Region	65.20	65	-0.3%	5.22	5.22	0%
Zlín Region	29.53	25.3	-14.3%	4.29	4.29	0%
Czech Republic	718.41	732.72	2%	7.08	7.08	0%

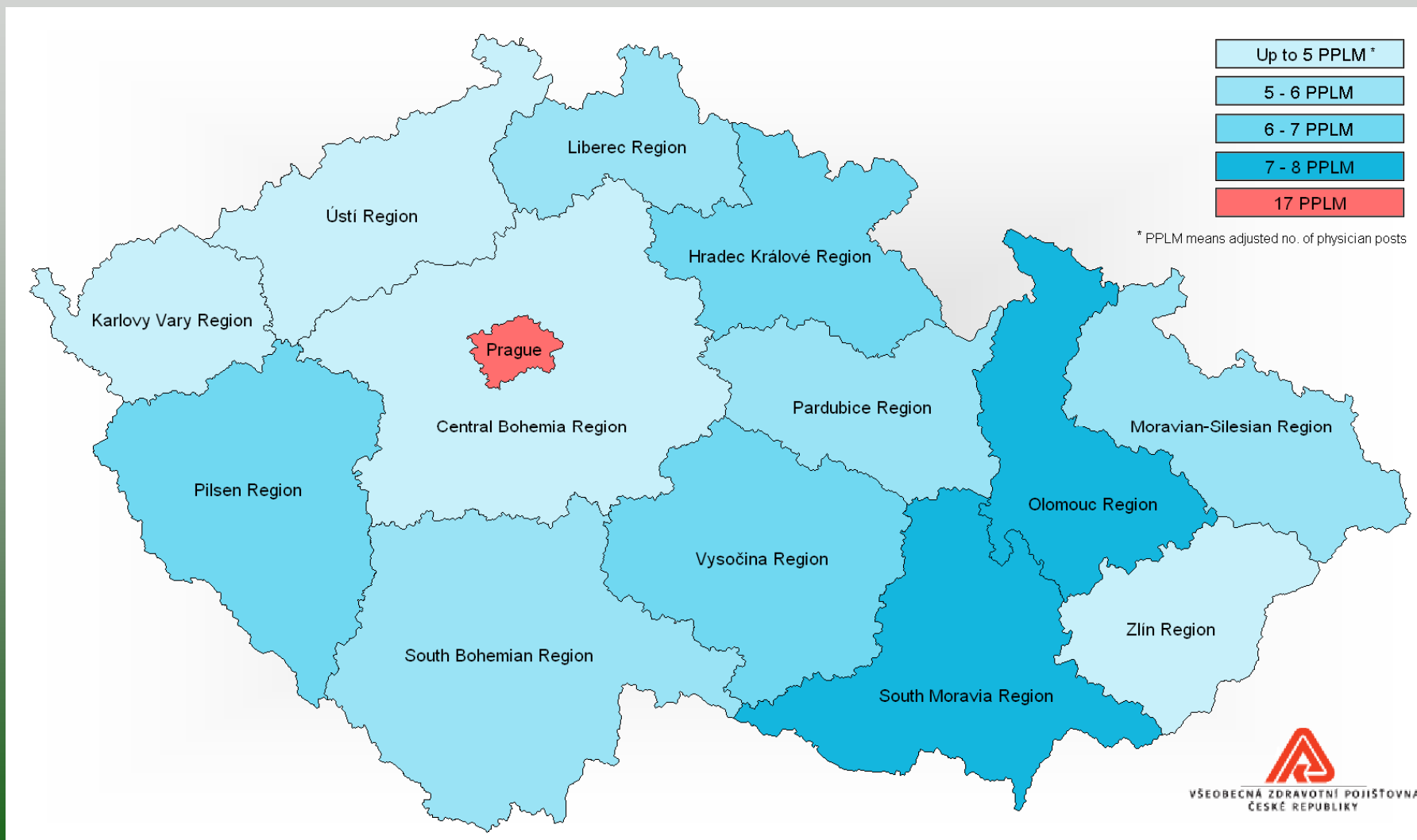
These figures include the following specialties:

- psychiatry,
- child psychiatry
- geriatric psychiatry
- treatment of alcoholism and other forms of toxicomania



VŠEOBECNÁ ZDRAVOTNÍ POJIŠŤOVNA
ČESKÉ REPUBLIKY

Adjusted number of physician posts (PPLM) per 100 thousand inhabitants according to region in 2008 Psychiatry ambulatory care



VŠEOBECNÁ ZDRAVOTNÍ POJIŠŤOVNA
ČESKÉ REPUBLIKY

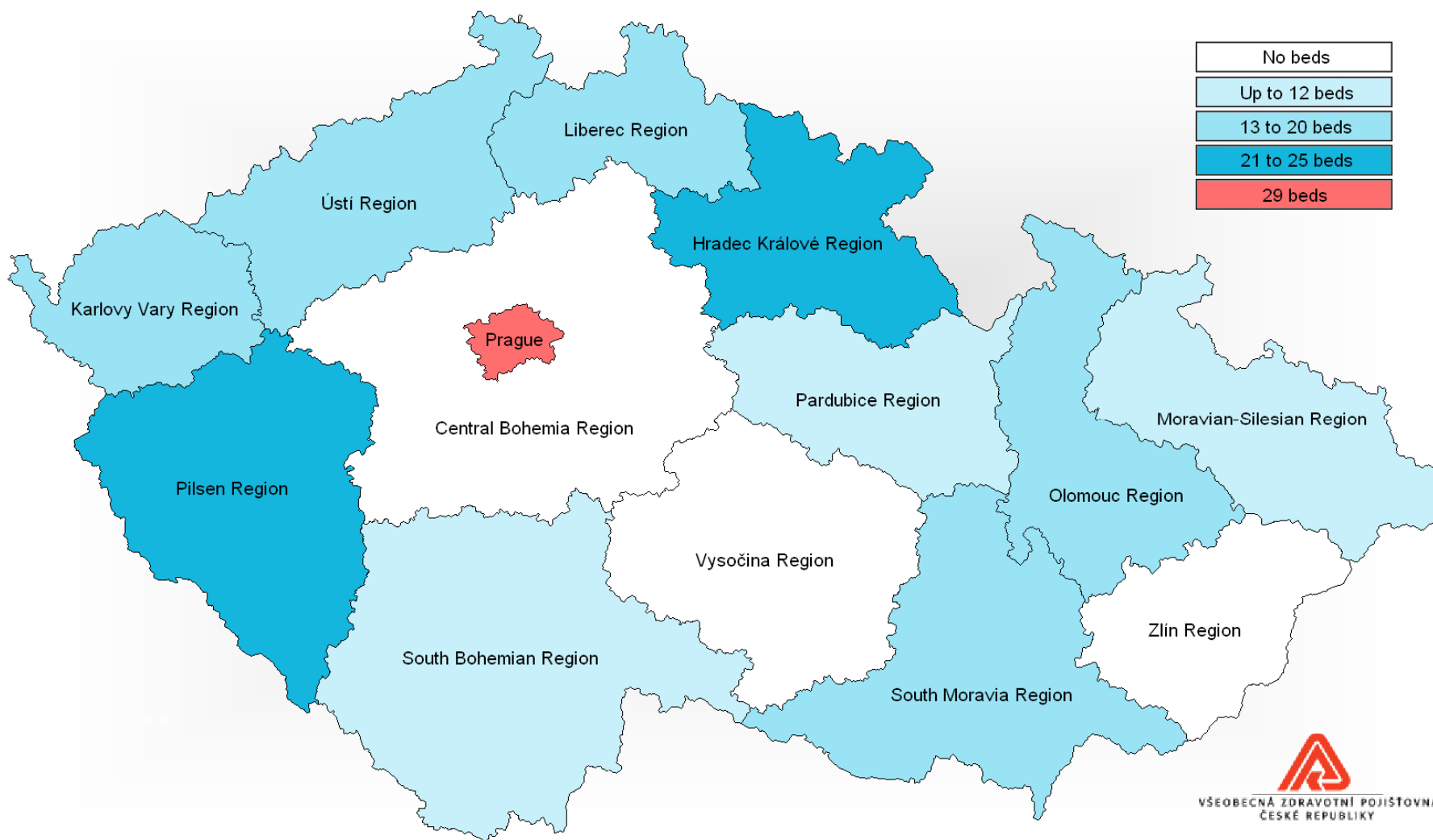
Network of emergency psychiatric beds (holding beds) sorted by region in the years 2007 and 2008

Region	Number of beds			Calculated per 100 000 inhabitants		
	y. 2007	y. 2008	change in %	y. 2007	y. 2008	change in %
City of Prague	355	351	-1.1%	29.81	29.45	-1.2%
Central Bohemia Region	0	0	0%	0.00	0.00	0%
South Bohemian Region	65	65	0%	10.38	10.35	-0.3%
Pilsen Region	129	129	0%	23.16	23.08	-0.3%
Karlovy Vary Region	45	45	0%	14.83	14.88	0.3%
Ústí Region	118	121	2.5%	14.29	14.66	2.6%
Liberec Region	76	76	0%	17.48	17.47	-0.1%
Hradec Králové Region	111	111	0%	20.19	20.16	-01%
Pardubice Region	55	55	0%	10.76	10.74	-0.2%
Vysočina Region	60	0	-100%	11.75	0.00	-100%
South Moravia Region	184	189	2.7%	16.02	16.48	2.9%
Olomouc Region	115	115	0%	18.05	18.05	0%
Moravian-Silesian Region	91	91	0%	7.28	7.30	0.3%
Zlín Region	0	0	0%	0.00	0.00	0%
Czech Republic	1 404	1 348	-4%	13.59	13.03	-4.1%

Number of emergency psychiatric beds (holding beds) per 100 thousand inhabitants in 2008



VŠEOBECNÁ ZDRAVOTNÍ POJIŠTOVNA
ČESKÉ REPUBLIKY



VŠEOBECNÁ ZDRAVOTNÍ POJIŠTOVNA
ČESKÉ REPUBLIKY

Number of beds for follow-up care in psychiatric sanatoria sorted by region in the years 2007 and 2008

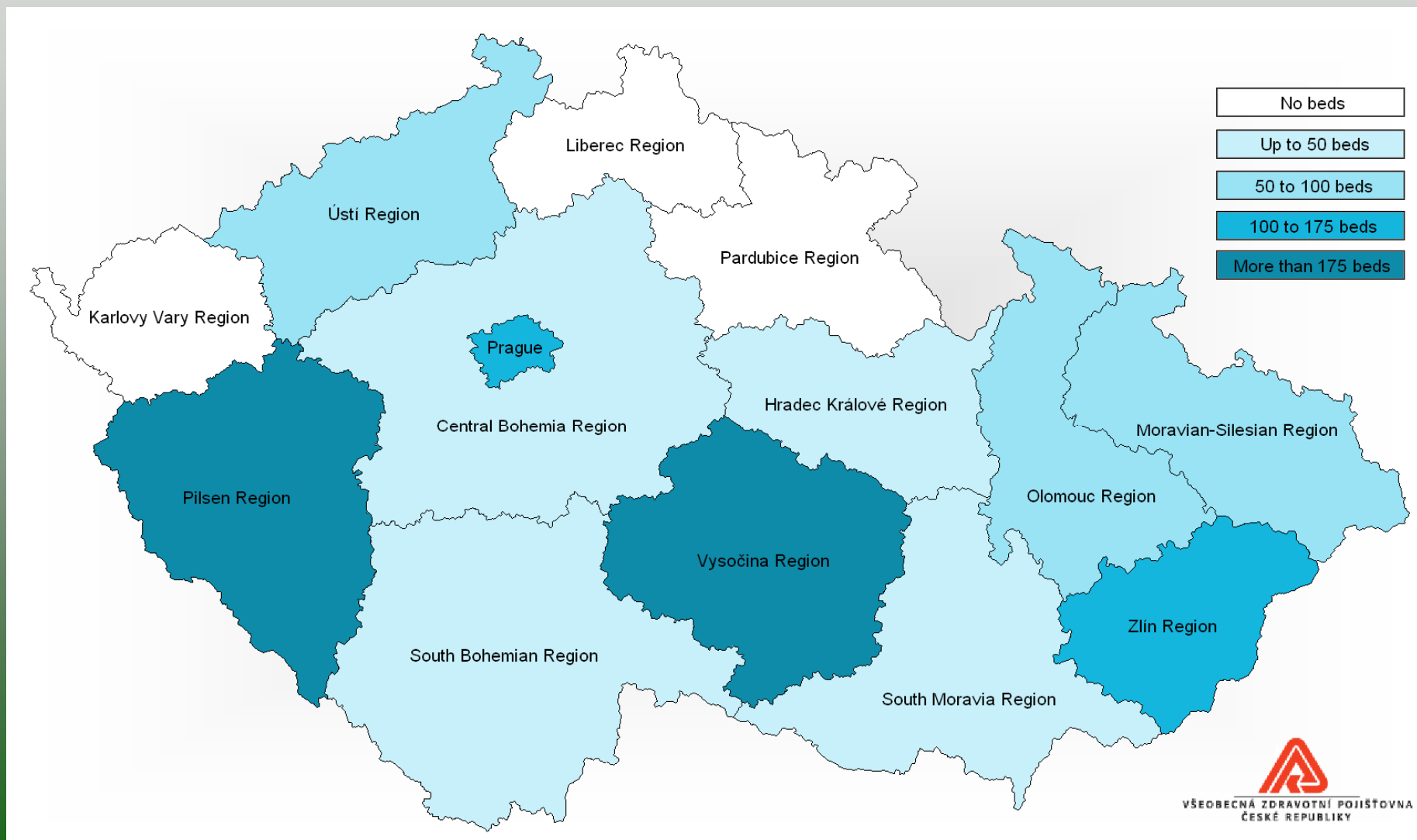


VŠEOBECNÁ ZDRAVOTNÍ POJIŠTOVNA
ČESKÉ REPUBLIKY

Region	Number of beds			Calculated per 100 000 inhabitants		
	y. 2007	y. 2008	change in %	y. 2007	y. 2008	change in %
City of Prague	1 376	1358	-1.3%	115.54	113.93	-1.4%
Central Bohemia Region	600	600	0%	50.12	49.52	-1.2%
South Bohemian Region	353	70	-80.2%	56.37	11.15	-80.2%
Pilsen Region	1 278	1238	-3.1%	229.41	221.53	-3.4%
Karlovy Vary Region	0	0	0%	0	0	0%
Ústí Region	837	767	-8.4%	101.36	92.90	-8.3%
Liberec Region	0	0	0%	0	0	0%
Hradec Králové Region	56	0	-100%	10.18	0	-100%
Pardubice Region	36	36	0%	7.04	7.03	-01%
Vysočina Region	1 446	1088	-24.8%	283.26	213.14	-24.8%
South Moravia Region	794	559	-29.6%	69.15	48.73	-29.5%
Olomouc Region	611	493	-19.3%	95.91	77.40	-19.3%
Moravian-Silesian Region	1 015	1015	0%	81.23	81.44	0.3%
Zlín Region	1 058	936	-11.5%	179.28	158.73	-11.5%
Czech Republic	9 460	8160	-13.7%	91.56	78.86	-13.9%

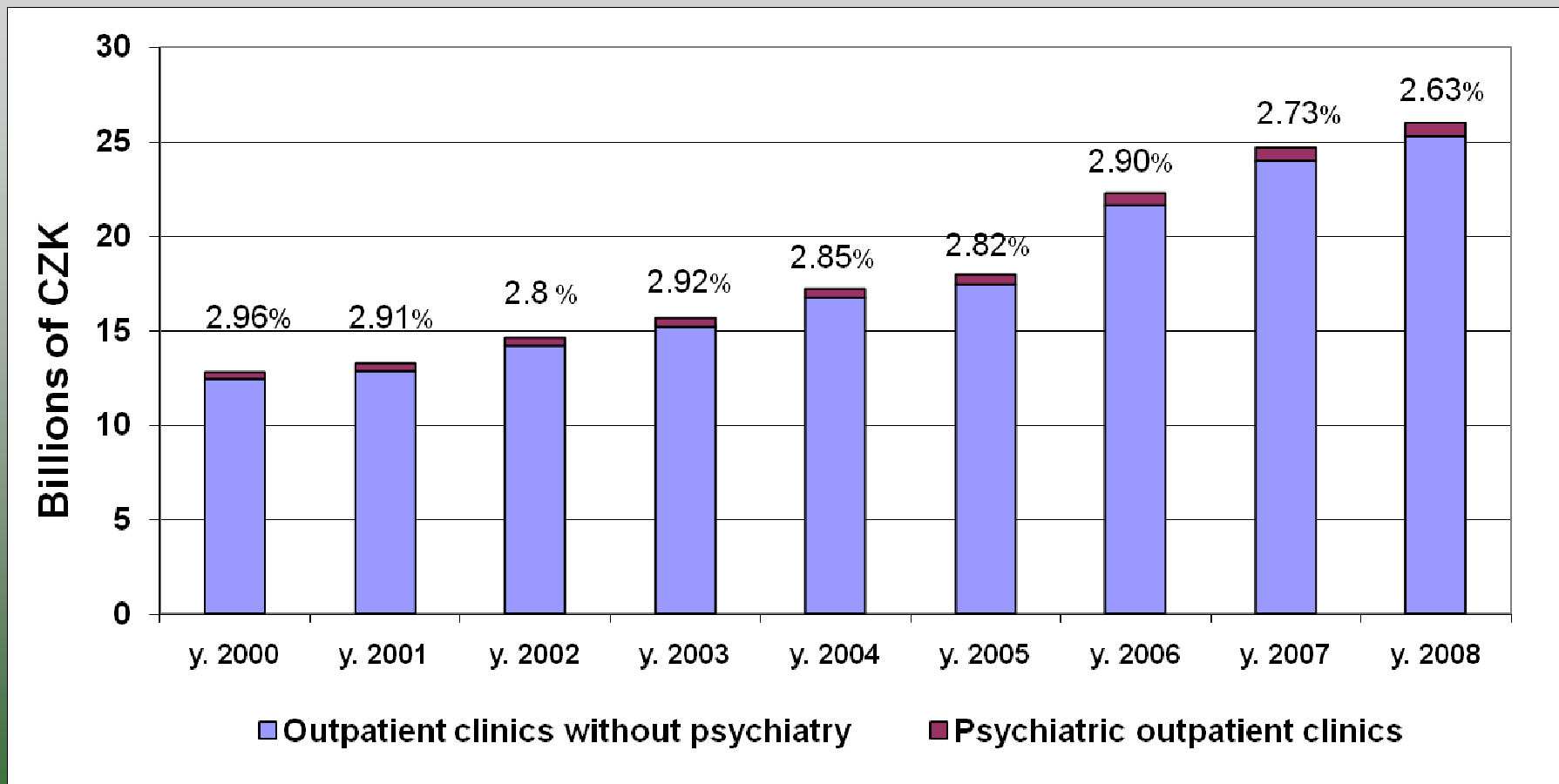


Number of beds for follow-up care in psychiatric sanatoria per 100 thousand inhabitants in 2008



Cost of psychiatric care provided in the years 2000 to 2008

a) Care in outpatient clinics

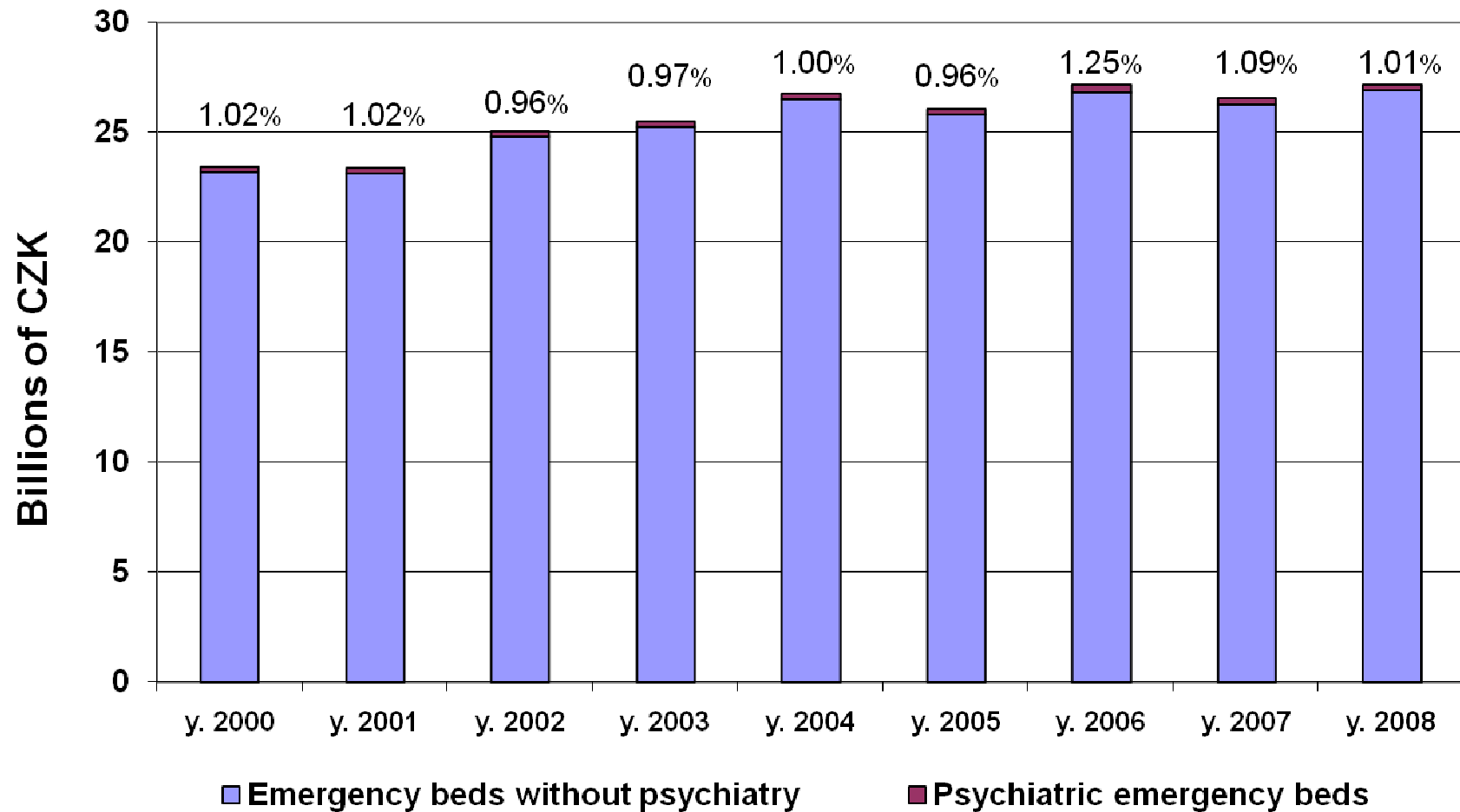


NB: - Does not include the cost of prescription drugs and health aids.
 - The proportion of psychiatry ambulatory care out of total ambulatory care is expressed in percentage.

Ambulatory medical care – quarterly indicators in 2008

Field and speciality	Average number of contacts per quarter	Average no. of insured treated per quarter	Average no. of points per quarter	Average quarterly costs of medication and health aids in CZK
301 Pediatrics	81 045	61 040	24 202 304	39 262 943
303 Adolescent Medicine	1 480	1 262	494 500	92 101
304 Neonatology	1 763	1 414	575 740	49 606
305,306 Psychiatry	365 323	213 813	140 918 947	369 775 248
308 Treatment of alcoholism and other forms of toxicomania	5 983	2 845	2 757 269	1 483 422
309 Sexuology	6 255	4 720	3 656 865	1 463 941
401 Occupational diseases	14 919	11 173	5 954 234	336 271
402 Clinical oncology	153 062	76 553	52 923 504	251 748 496
403 Radiotherapy	59 996	31 026	225 591 539	45 030 062
404,405,406 Dermatovenerology	537 396	387 872	126 517 531	91 185 446
407 Nuclear Medicine	61 855	30 257	100 617 334	472 261
501,502 Surgery	909 332	602 681	265 929 561	106 122 426
503 Traumatology	81 931	56 997	17 573 562	11 556 166
504 Vascular Surgery	16 633	12 599	4 264 536	2 574 198
505 Cardiac Surgery	4 076	3 032	5 987 092	1 636 151
506 Neurosurgery	19 508	15 031	8 061 365	1 045 921

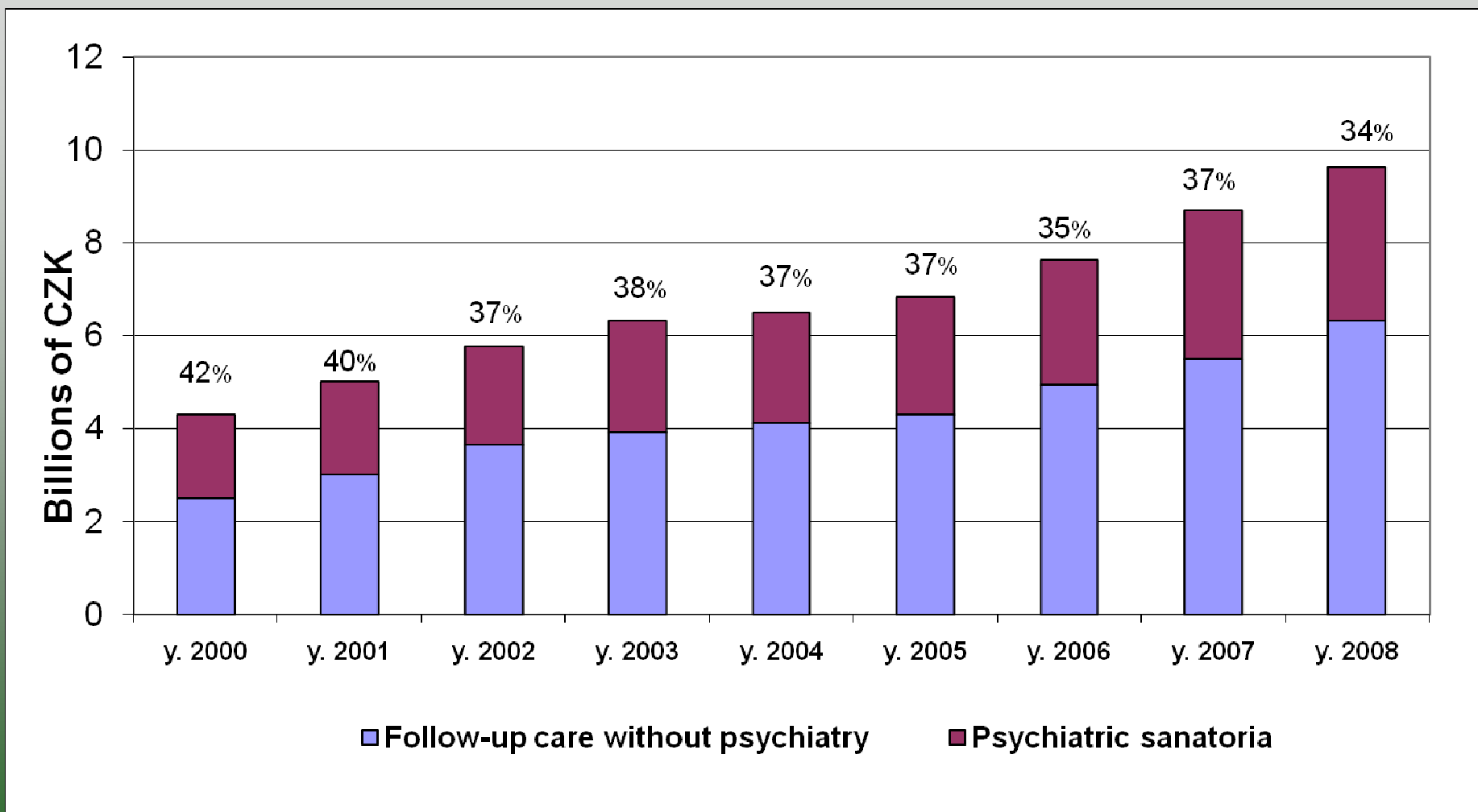
Cost of emergency inpatient psychiatric care in the years 2000 to 2008



NB: The proportion of emergency psychiatric beds out of total emergency beds is expressed in percentage



Cost of care provided by psychiatric sanatoria in the years 2000 to 2008



NB: - Does not include the cost of medication and health aids
- The proportion of psychiatric sanatoria out of total follow-up care facilities is expressed in percentage

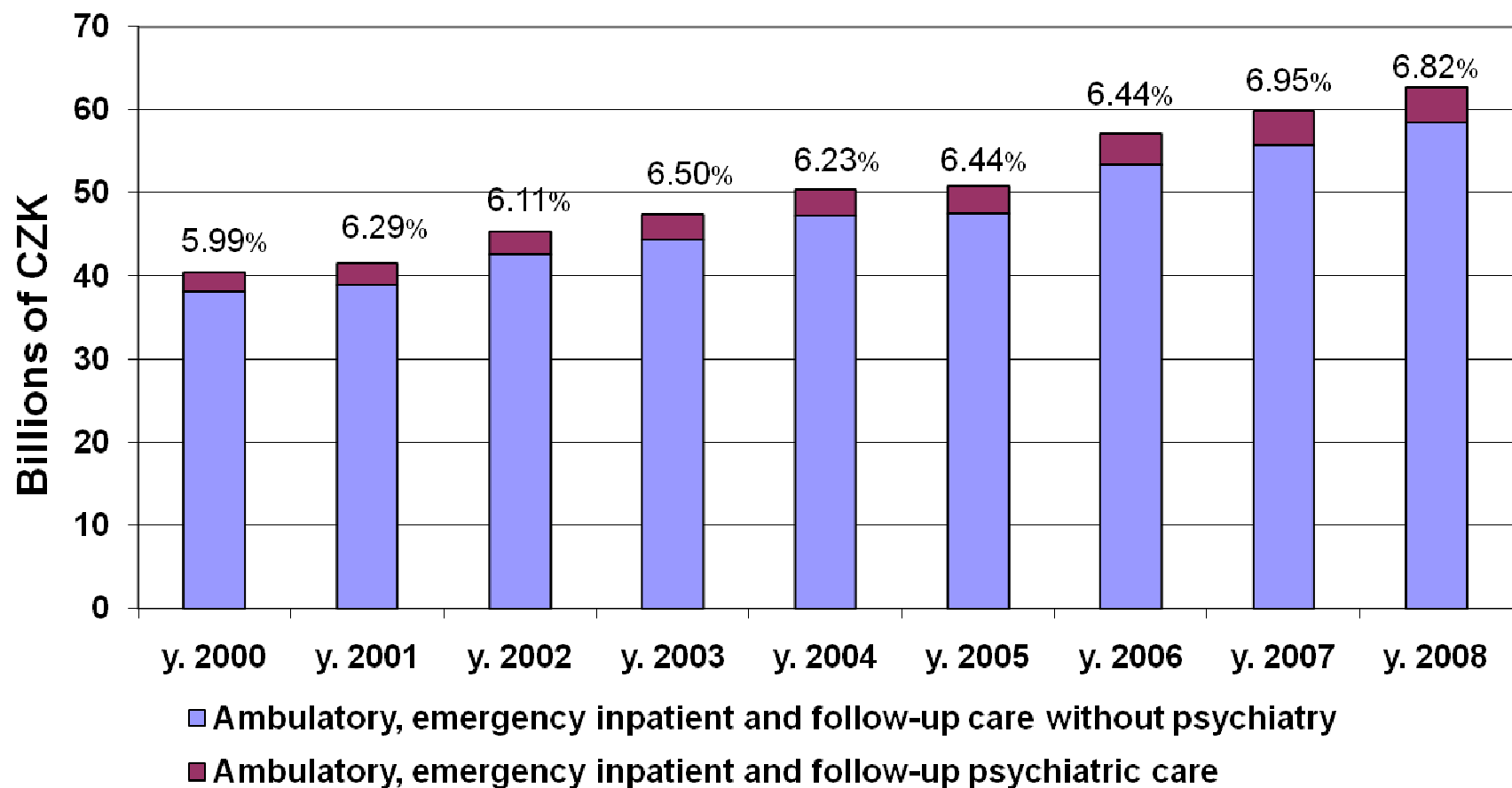
Average tariff rates per treatment day (OD) in psychiatric sanatoria in the years 2005 – 2008

Specialized institution- Psychiatry		y.2005	y.2006	y.2007	y.2008
Basic average tariff rate per OD	In CZK	966	996	1 045	1 077
	Increase in % compared to previous year		103.1%	104.9%	103.1%

Note:

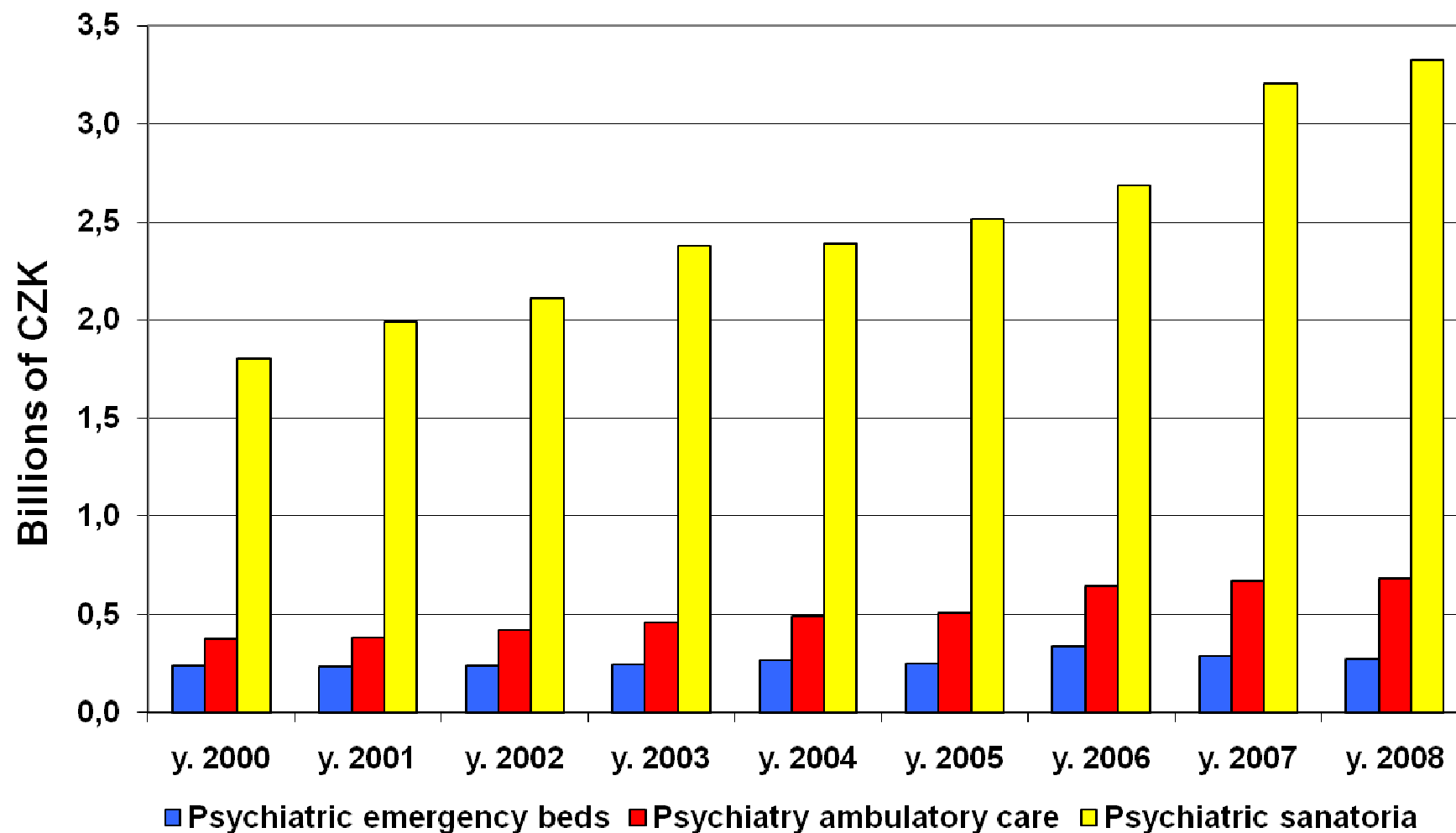
This tariff rate per treatment day does not take into consideration patient categories !

Total costs in the field of psychiatry in the years 2000 to 2008 (both outpatient and inpatient care)



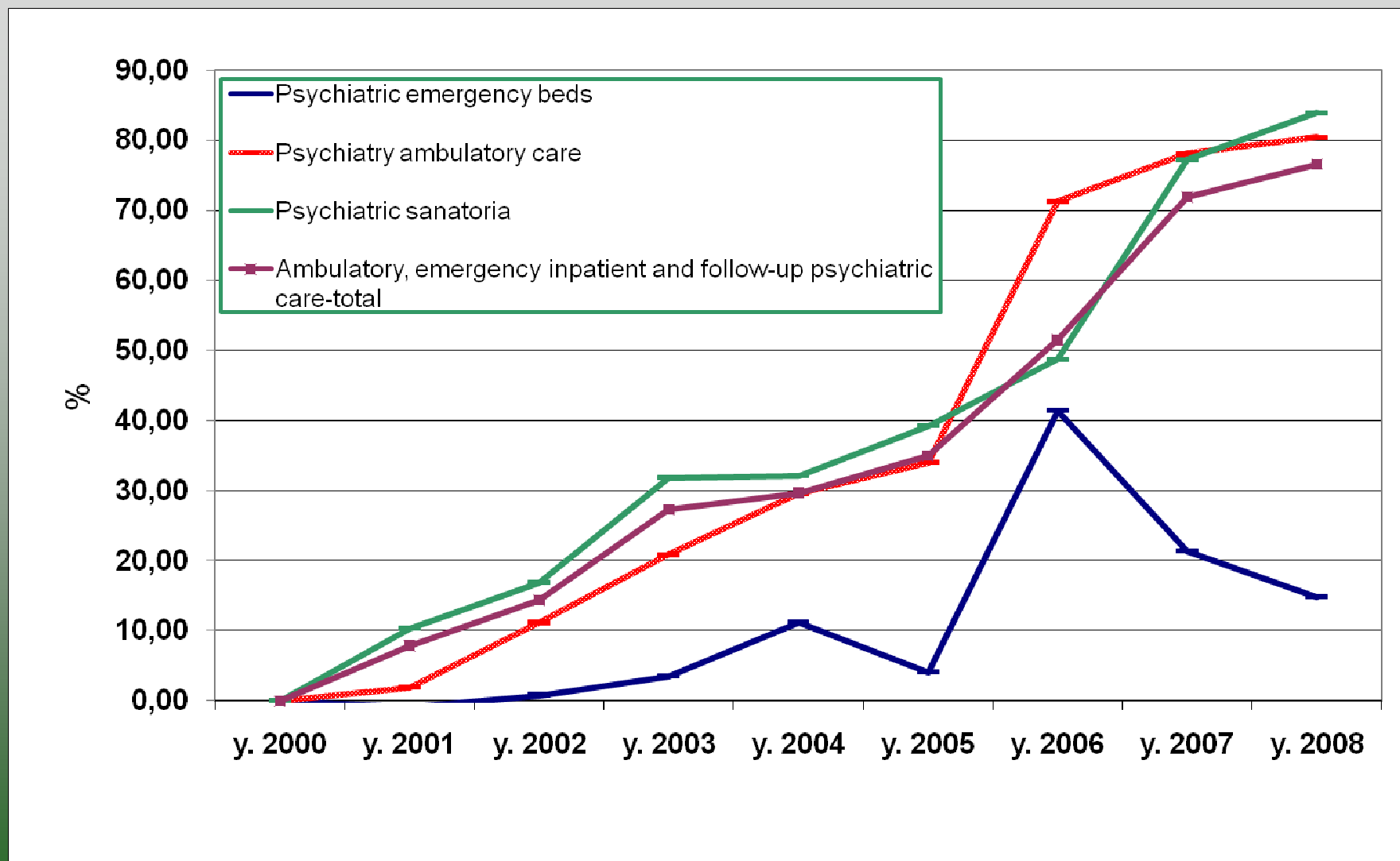
NB: Does not include the cost of medication and health aids

Development of costs incurred by VZP (in billions of CZK) in the field of psychiatry in the years 2000 - 2008



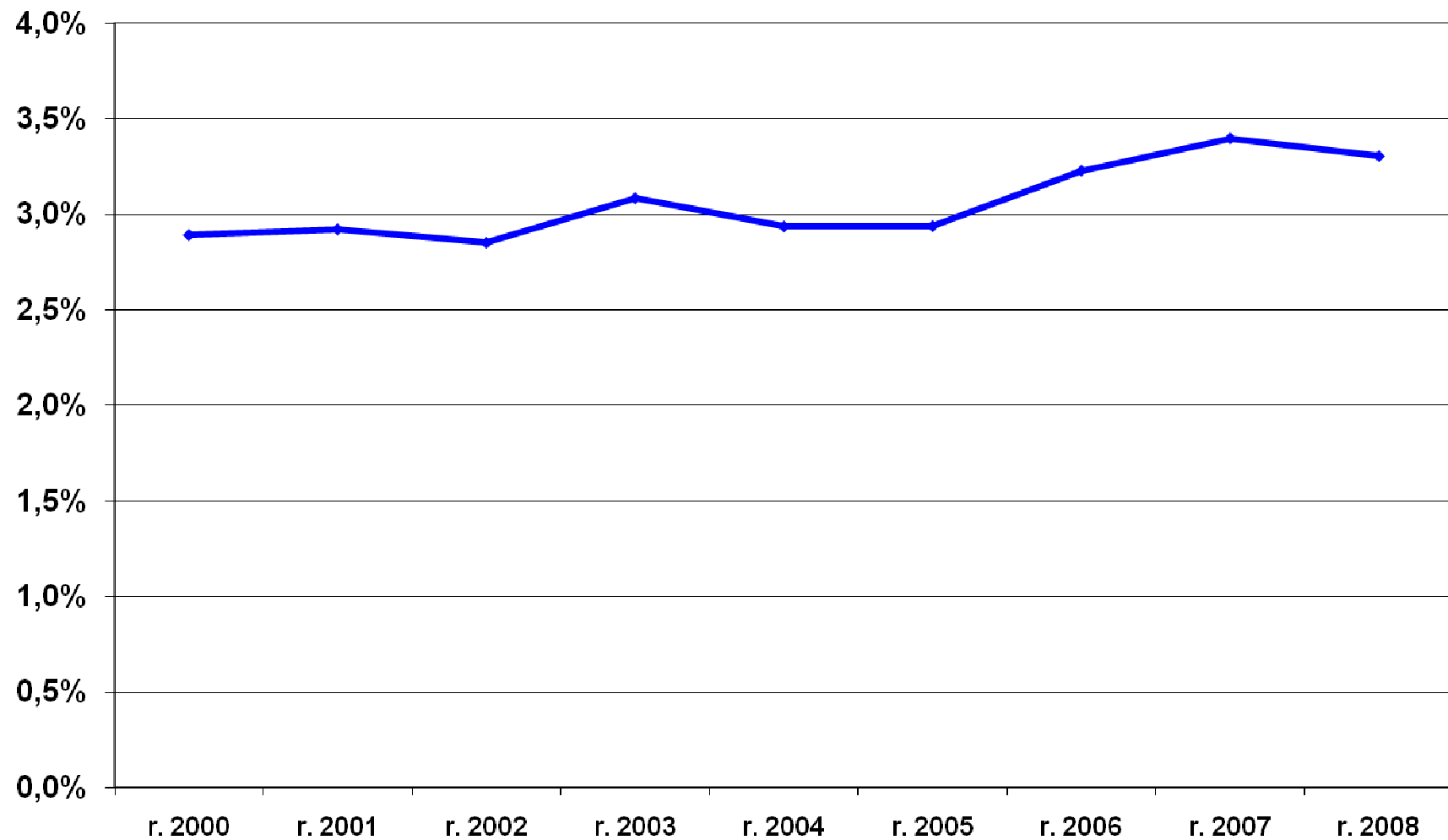
NB: Does not include the cost of medication and health aids

The growth of costs in the field of psychiatry in the years 2000 – 2008



NB: Does not include the cost of medication and health aids

The cost of care provided in the field of psychiatry in the years 2000 – 2008

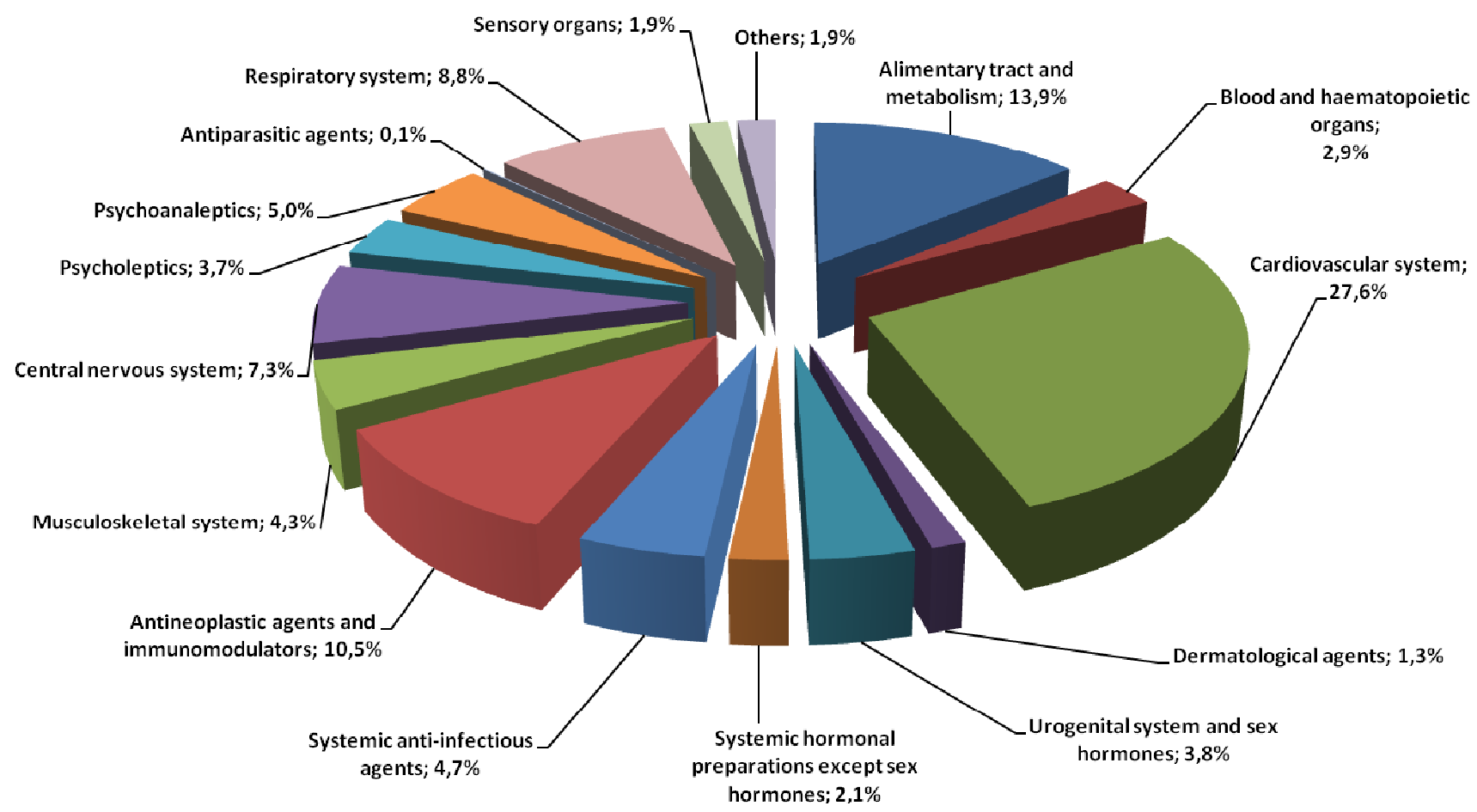


The cost of drugs and medication prescribed to the insured of VZP ČR in 2008 by contractual health facilities



		y.2001	y.2002	y.2003	y.2004	y.2005	y.2006	y.2007	y.2008
Alimentary tract and metabolism	mil.CZK	2 466	2 567	2 690	2 898	3 041	2 947	3 075	3 042
	%	12.8%	12.4%	12.3%	12.0%	12.3%	12.9%	13.6%	13.9%
Blood and haematopoietic organs	mil.CZK	390	391	426	485	559	563	633	634
	%	2.0%	1.9%	1.9%	2.0%	2.3%	2.5%	2.8%	2.9%
Cardiovascular system	mil.CZK	5 689	6 008	6 398	7 067	6 650	6 117	6 553	6 053
	%	29.6%	29.1%	29.2%	29.4%	26.9%	26.8%	29.1%	27.6%
Dermatological agents	mil.CZK	416	413	412	410	398	326	335	280
	%	2.2%	2.0%	1.9%	1.7%	1.6%	1.4%	1.5%	1.3%
Urogenital system and sex hormones	mil.CZK	864	939	948	1 017	1 000	918	892	840
	%	4.5%	4.6%	4.3%	4.2%	4.0%	4.0%	4.0%	3.8%
Systemic hormonal preparations except sex hormones	mil.CZK	317	362	364	355	362	522	494	471
	%	1.7%	1.8%	1.7%	1.5%	1.5%	2.3%	2.2%	2.1%
Systemic anti-infectious agents	mil.CZK	1 186	1 133	1 154	1 153	1 274	1 019	1 050	1 030
	%	6.2%	5.5%	5.3%	4.8%	5.2%	4.5%	4.7%	4.7%
Antineoplastic agents and immunomodulators	mil.CZK	1 858	2 390	2 745	3 274	3 692	3 435	2 037	2 289
	%	9.7%	11.6%	12.5%	13.6%	14.9%	15.0%	9.0%	10.5%
Musculoskeletal system	mil.CZK	1 296	1 405	1 462	1 569	1 510	1 144	1 080	948
	%	6.7%	6.8%	6.7%	6.5%	6.1%	5.0%	4.8%	4.3%
Central nervous system	mil.CZK	1 023	1 110	1 211	1 357	1 527	1 450	1 583	1 601
	%	5.3%	5.4%	5.5%	5.6%	6.2%	6.3%	7.0%	7.3%
Psycholeptics	mil.CZK	516	595	639	676	674	699	783	805
	%	2.7%	2.9%	2.9%	2.8%	2.7%	3.1%	3.5%	3.7%
Psychoanaleptics	mil.CZK	721	794	855	998	1 095	1 035	1 100	1 099
	%	3.8%	3.8%	3.9%	4.1%	4.4%	4.5%	4.9%	5.0%
Antiparasitic agents	mil.CZK	23	23	22	22	18	17	18	20
	%	0.1%	0.1%	0.1%	0.1%	0.1%	0.1%	0.1%	0.1%
Respiratory system	mil.CZK	1 729	1 770	1 850	1 997	2 162	1 883	2 055	1 931
	%	9.0%	8.6%	8.4%	8.3%	8.7%	8.2%	9.1%	8.8%
Sensory organs	mil.CZK	282	306	323	353	380	377	414	425
	%	1.5%	1.5%	1.5%	1.5%	1.5%	1.6%	1.8%	1.9%
Others	mil.CZK	422	431	439	438	395	400	437	424
	%	2.2%	2.1%	2.0%	1.8%	1.6%	1.8%	1.9%	1.9%
Total		19 198	20 635	21 937	24 070	24 737	22 851	22 539	21 892

The cost of drugs and medication prescribed to the insured of VZP ČR in 2008 by contractual health facilities



Psychoanaleptics – the costliest ATCs of all prescription drugs

ATC	ATC Name	Cost in thous. CZK			Index	
		year 2006	year 2007	year 2008	y.2008 / y.2007	y.2008 / y.2006
N06AB04	Citalopram	231 311	250 561	240 812	0.96	1.04
N06AB06	Sertraline	180 229	199 936	198 368	0.99	1.10
N06AB10	Escitalopram	65 173	78 551	78 918	1.00	1.21
N06AX16	Venlafaxine	29 139	49 231	70 707	1.44	2.43
N06AX11	Mirtazapin	47 217	54 841	60 520	1.10	1.28
N06DA02	Donepezil	37 981	46 844	58 570	1.25	1.54
N06AB05	Paroxetine	51 327	56 904	53 231	0.94	1.04
N06AB03	Fluoxetine	57 538	47 735	37 622	0.79	0.65
N06BX03	Piracetam	49 150	43 410	35 907	0.83	0.73
N06DA03	Rivastigmin	38 724	33 874	35 471	1.05	0.92
N06DX01	Memantine	29 652	29 900	34 827	1.16	1.17
N06AX05	Trazodone	23 034	27 998	28 025	1.00	1.22
N06DX02	Ginkgo biloba	50 995	37 072	25 229	0.68	0.49
N06DA04	Galantamine	22 608	23 759	21 996	0.93	0.97

Psychoanaleptics – costliest prescription drugs

Name	Note	ATC	Cost in thous. CZK		Index
			year 2007	year 2008	
CITALEC	film coated tablets	N06AB04	109 082	97 761	0.90
CIPRALEX 10 MG	film coated tablets 28x10mg	N06AB10	78 551	78 918	1.00
ZOLOFT	film coated tablets	N06AB06	62 619	64 635	1.03
ASENTRA	film coated tablets	N06AB06	50 373	55 252	1.10
CITALOPRAM	film coated tablets	N06AB04	28 353	45 443	1.60
EXELON	hard capsules	N06DA03	33 874	35 471	1.05
EBIXA 10 MG	hard capsules 56x10mg	N06DX01	29 595	34 473	1.16
ARGOFAN	modified release tablet	N06AX16	26 763	33 245	1.24
ARICEPT	tablets	N06DA02	31 575	32 994	1.04
TRITTICO AC	extended release tablets	N06AX05	27 998	28 025	1.00
YASNAL	film coated tablets	N06DA02	15 269	25 576	1.67
SEROPRAM 20 MG	film coated tablets 28x20mg	N06AB04	33 365	25 137	0.75
SERLIFT	film coated tablets	N06AB06	35 009	24 480	0.70
REMOOD 20 MG	film coated tablets 30x20mg	N06AB05	26 483	22 918	0.87
APO-CITALOPRAM	film coated tablets	N06AB04	45 515	22 099	0.49
MIRZATEN	film coated tablets	N06AX11	16 264	22 045	1.36
CITALON	film coated tablets	N06AB04	15 954	20 453	1.28
APO-PAROX	film coated tablets	N06AB05	22 952	19 237	0.84
REMINYL	Capsules, tablets	N06DA04	22 952	17 758	0.77
ESPRITAL	film coated tablets	N06AX11	26 904	17 525	0.65
GERATAM	film coated tablets	N06BX03	18 339	16 463	0.90
APO-CITAL	film coated tablets	N06AB04	6	15 101	
APO-SERTRAL	hard capsules	N06AB06	19 871	14 721	0.74
VELAXIN	hard capsules	N06AX16	15 178	14 296	0.94

Psychoanaleptics – most frequently prescribed drugs

Name	Note	ATC	Cost in thous. CZK		Index
			year 2007	year 2008	
CITALEC	film coated tablets	N06AB04	391	320	0.82
CIPRALEX 10 MG	film coated tablets 28x10mg	N06AB10	272	281	1.03
PROTHIADEN 25	coated tablets 30x25mg	N06AA16	268	213	0.80
PIRACETAM	film coated tablets	N06BX03	229	193	0.84
ZOLOFT	film coated tablets	N06AB06	178	190	1.07
GERATAM	film coated tablets	N06BX03	204	173	0.85
ASENTRA	film coated tablets	N06AB06	150	163	1.09
CITALOPRAM	film coated tablets	N06AB04	101	160	1.59
GINGIO	film coated tablets	N06DX02	219	138	0.63
TRITTICO AC	extended release tablets	N06AX05	111	114	1.03
TANAKAN	film coated tablets	N06DX02	130	97	0.75
SERTRALIN	film coated tablets	N06AB06	59	90	1.52
SEROPRAM 20 MG	film coated tablets 28x20mg	N06AB04	115	90	0.78
REMOOD 20 MG	film coated tablets 30x20mg	N06AB05	86	77	0.90
CITALON	film coated tablets	N06AB04	56	76	1.36
AMITRIPTYLIN	film coated tablets 50x28.3mg	N06AA09	86	71	0.83
MIABENE	film coated tablets	N06AX03	73	70	0.97
MIRZATEN	film coated tablets	N06AX11	49	68	1.37
ARGOFAN	modified release tablets	N06AX16	55	67	1.22
CAVINTON	tablets 50x5mg	N06BX18	90	62	0.69
SERLIFT	film coated tablets	N06AB06	98	58	0.59
ANAFRANIL	tablets	N06AA04	66	57	0.87
TEBOKAN 40 MG	film coated tablets	N06DX02	57	55	0.95
ESPRITAL	film coated tablets	N06AX11	79	53	0.67

Psycholeptics – the costliest ATCs of all prescription drugs

ATC	ATC Name	Cost in thous. CZK			Index	
		year 2006	year 2007	year 2008	y.2008 / y.2007	y.2008 / y.2006
N05AH03	Olanzapine	160 404	199 930	219 820	1.10	1.37
N05AH04	Qvetiapine	78 433	103 311	141 787	1.37	1.81
N05AX08	Risperidone	112 466	95 081	77 642	0.82	0.69
N05AL05	Amisulpride	59 751	62 222	55 885	0.90	0.94
N05AL03	Tiaprid	49 593	53 812	50 253	0.93	1.01
N05AE04	Ziprasidone	40 079	47 647	49 351	1.04	1.23
N05AX12	Aripiprazol	18 767	35 398	44 397	1.25	2.37
N05BA12	Alprazolam	31 186	31 947	26 031	0.81	0.83
N05AX11	Zotepine	24 121	23 421	22 600	0.96	0.94
N05AH02	Clozapine	17 163	19 158	20 214	1.06	1.18
N05BX01	Mefenoxalone	22 084	21 748	16 944	0.78	0.77
N05AL01	Sulpiride	15 461	15 357	13 748	0.90	0.89
N05AA02	Levomepromazine	13 898	12 880	11 372	0.88	0.82
N05AD03	Melperon	8 155	9 806	10 721	1.09	1.31

Psycholeptics - costliest prescription drugs

Name	Note	ATC	Cost in thous. CZK		Index
			year 2007	year 2008	
ZYPREXA	film coated tablets	N05AH03	135 467	140 197	1.03
SEROQUEL	film coated tablets	N05AH04	98 840	85 020	0.86
ZYPREXA VELOTAB	orodispersible tablets	N05AH03	64 407	79 623	1.24
ZELDOX	por cps dur 30x40mg	N05AE04	46 320	47 753	1.03
ABILIFY	tablets	N05AX12	35 398	44 397	1.25
SOLIAN	tablets	N05AL05	47 490	43 319	0.91
TIAPRIDAL	tablets	N05AL03	37 677	38 489	1.02
ZOLEPTIL	tablets	N05AX11	23 421	22 600	0.96
KETILEPT	film coated tablets	N05AH04	3 359	20 656	6.15
NEUROL	Tablets	N05BA12	23 339	20 437	0.88
RISPERDAL	film coated tablets	N05AX08	22 315	19 393	0.87
QUETIAPIN MERCK	film coated tablets	N05AH04		18 275	
LEPONEX	tablets	N05AH02	17 615	17 524	0.99
RISPEN	film coated tablets	N05AX08	18 186	13 166	0.72
DENIBAN	tablets 60x50mg	N05AL05	14 348	12 566	0.88
KVENTIAX	film coated tablets	N05AH04		12 168	
TISERCIN	film coated tablets 50x25mg	N05AA02	12 880	11 372	0.88
BURONIL 25 MG	tablets 50x25mg	N05AD03	9 793	10 716	1.09
DORSIFLEX 200MG	tablets 30x200mg	N05BX01	13 687	9 833	0.72
DIMEXOL	por tbl nob 30x200mg	N05BX01	8 061	7 111	0.88
TIAPRA	film coated tablets	N05AL03	10 333	6 875	0.67
CHLORPROTHIXEN	film coated tablets	N05AF03	8 144	6 800	0.83
HALOPERIDOL-RICHTER 1.5 MG	tablets 50x1.5mg	N05AD01	6 834	6 291	0.92

Psycholeptics – most frequently prescribed drugs

Name	Note	ATC	Cost in thous. CZK		Index
			year 2007	year 2008	
NEUROL	tablets	N05BA12	1158	568	0.49
LEXAURIN	tablets	N05BA08	1040	326	0.31
DIAZEPAM	tablets	N05BA01	695	288	0.41
CHLORPROTHIXEN	film coated tablets	N05AF03	278	239	0.86
TIAPRIDAL	tablets	N05AL03	205	213	1.04
TISERCIN	film coated tablets 50x25mg	N05AA02	210	194	0.92
OXAZEPAM LÉČIVA	tablets 20x10mg	N05BA04	416	128	0.31
DORSIFLEX 200MG	tablets 30x200mg	N05BX01	171	123	0.72
HALOPERIDOL-RICHTER 1.5 MG	tablets 50x1.5mg	N05AD01	117	108	0.92
BURONIL 25 MG	tablets 50x25mg	N05AD03	96	106	1.09
ZYPREXA	film coated tablets	N05AH03	85	92	1.09
DIMEXOL	tablets 30x200mg	N05BX01	101	89	0.88
PROSULPIN	tablets	N05AL01	74	69	0.93
DOGMATIL 50 MG	hard capsules 30x50mg	N05AL01	74	59	0.80
PLEGOMAZIN	tablets	N05AA01	57	59	1.02
RISPERDAL	film coated tablets	N05AX08	79	56	0.71
FRONTIN	tablets	N05BA12	80	54	0.68
SEROQUEL	film coated tablets	N05AH04	55	51	0.92
TIAPRA	film coated tablets 50x100mg	N05AL03	61	40	0.66
ZOLEPTIL	tablets	N05AX11	42	40	0.94
ATARAX	tablets 25x25mg	N05BB01	62	35	0.56
ELENIUM	coated tablets 20x10mg	N05BA02	41	32	0.77
TIAPRID-RATIOPHARM 100 MG	tablets 50x100mg	N05AL03	36	29	0.81
XANAX	tablets	N05BA12	44	29	0.66
RORENDO ORO TAB	orodispersible tablets	N05AX08	9	27	2.94

Average reimbursement per 1 package

N05 - Psycholeptics

	No. of packages in mil.	Cost in mil. CZK	Average reimbursement per 1 package
y.2000	6.7	453	67.4
y.2001	6.6	516	78.6
y.2002	6.5	595	92.0
y.2003	6.3	639	101.8
y.2004	6.2	676	108.4
y.2005	6.0	674	112.0
y.2006	5.8	699	121.3
y.2007	6.0	783	130.6
y.2008	3.6	805	226.4



Average reimbursement per 1 package

N06 - Psychoanaleptics

	No. of packages in mil.	Cost in mil. CZK	Average reimbursement per 1 package
y.2000	3.9	670	173.4
y.2001	4.0	721	180.7
y.2002	3.5	794	228.3
y.2003	3.3	855	259.9
y.2004	3.8	998	259.6
y.2005	4.1	1 095	266.0
y.2006	4.0	1 035	262.0
y.2007	4.3	1 100	255.7
y.2008	3.9	1099	278.7

Current Approach by VZP

- **Selective financing of psychiatry within the LTC**
- **Costs of pharmacotherapy will be reimbursed fairly**
- **Cost of hospitalization mainly for social reasons to be reimbursed by the Ministry of the social affairs nor medical insurance**
- **Promotion of continuity of the care between ambulatory and hospitalization care**
- **Program of quality of the care „AKORD“ will be cloned for psychiatric patients to address their special needs**
- **Promotion of structural changes (number of acute and chronic beds) by the Insurance company**